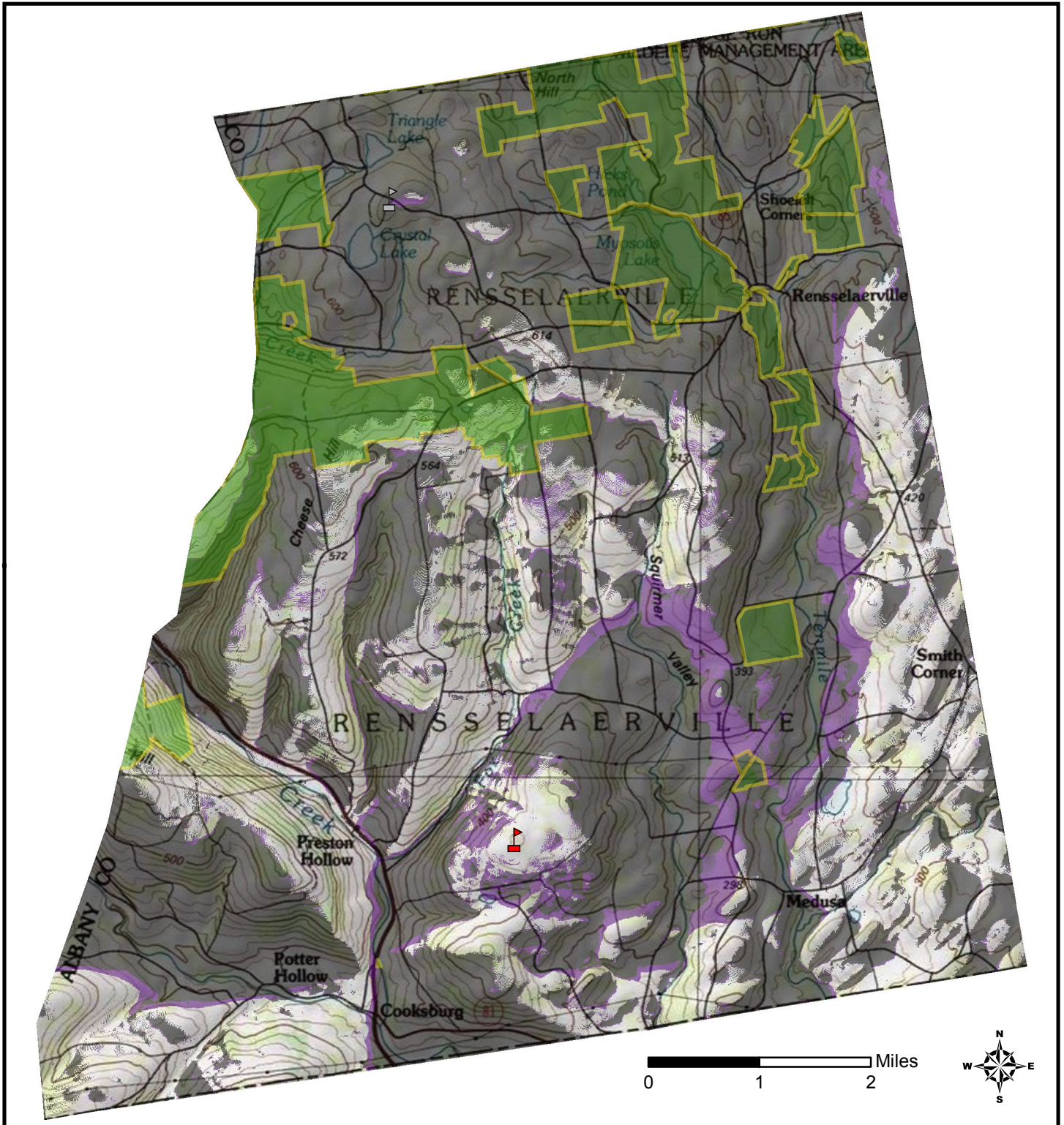





Map 1: Viewshed Study for Edward's Hill
 Grey areas are not visible from tower (approximates radio coverage)



-  Proposed Edward's Hill Tower
-  Existing Tower Road (Pond Hill) Tower
-  Protected Land

Purple areas are visible from 180 ft tower but not from 100 ft tower.

Grey areas are not visible from either tower.